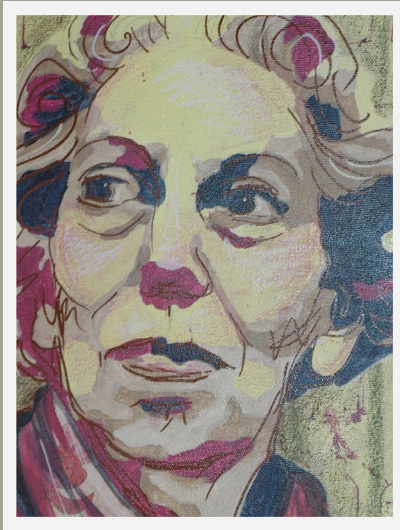


MGCCS AWARDS

Information:

- * Monthly meetings: 3rd Sunday each month (Sept-Apr), 2:30 PM
Garden Park Hospital, Gulfport, Ms
- * Show is in accordance with
American Camellia Society
- * Show Results are posted at
www.Americancamellias.org
- * MGCCS is on Facebook @
Mississippi gulf coast camellia society
- * MGCCS Grafting Workshop
Camellia growing and grafting workshop is February 20, 2016



Division A Unprotected

Class 1: Japonicas

- Best very large bloom and runner up
- Best large bloom and runner up
- Best medium bloom and runner up
- Best small bloom and runner up
- Best miniature bloom and runner up
- Best white bloom

Class 2: Reticulata and Reticulata Hybrids

- Best large/very large bloom and runner up
- Best medium or smaller bloom and runner up

Class 3: Non-Reticulata Hybrids

- Best large/very large bloom & runner up
- Best medium or smaller bloom & runner up

Class 4: Trays of Three (Same Variety).

- Japonicas– Best Tray of three
- Reticulata and Reticulata hybrids– Best tray of three
- Non-Reticulata hybrids—Best tray of three

Class 5: Species (Sasanquas etc. –Open to both unprotected and protected blooms) Awards will be given for best species and a runner up. Note "Species C. vernalis and hiemalis" should be included with Non-Reticulata hybrids as explained in Show rules.

Division B Protected.

Same four classes as in Division A and a parallel set of awards except there is not a protected award for Best White Bloom. Protected species will be included in Class 4 above.

Division C Blooms Grown on the Mississippi Gulf Coast

Class 1: Japonicas

- Best very large bloom
- Best large bloom
- Best medium bloom
- Best small bloom
- Best miniature bloom

Class 2: Reticulata Hybrids

- Best large/vey large bloom
- Best medium or smaller bloom

Class 3: Non-Reticulata Hybrids

- Best large/very large bloom
- Best medium or smaller bloom

Division D Seedlings and Mutations

Class 1: Seedlings

- Japonicas
- Reticulata hybrids and Non-Reticulata hybrids

Class 2: Mutations

Division D Heritage Plants (Open to all growers; plants listed in ACS as prior to 1945)

- Best Bloom and Runner up

The 63rd Annual MGCCS Camellia Show



November 21, 2015 Saturday

Mississippi Gulf Coast Camellia
Society

In cooperation with the

AMERICAN CAMELLIA SOCIETY

*The 2015 Mississippi Gulf Coast
Camellia Association is honoring*

Eudora Welty

As a supporter of

Camellia gardens

Mississippi Gulf Coast Camellia Society

Officers

President: Ann Miller

Vice President: William Lange

Record Sect: Andrea Kanne-gieser

Treasurer: Bruce Stinson

Corresponding Secretary: Steven Manis

Board of Directors: Doris LeFebvre, Andrea Kanne-gieser, Steve Manis, Rita Rester

Show Chairman: Al LeFebvre, Steve Manis

Awards: Martine Cave, Caroline Dickson

Clerks: Andrea Kanne-gieser

Plant Sales: William Lange

Publicity: Jana Harry

Show Rules

1. The show is held in cooperation with the American Camellia Society (ACS). The rules and regulations concerning the procedures and judging of ACS shows will apply. The decision of the judges will be final.
2. The show is open to any camellia grower. Exhibitors must place their own blooms. There will be no scoring distinction between treated and non-treated blooms. Exhibitors need not be a member of a camellia society.
3. The authority for bloom classification will be the current edition of *Camellia Nomenclature*, *Camellia Nomenclature Supplement* and recent *ACS Journals* (for the cultivars not yet included in *Camellia Nomenclature*. Species *hiemalis* and *vernalis* entries are to be entered as non-retic hybrids. Cultivars with multiple names will be entered under the preferred name in camellia nomenclature
4. ACS entry cards for classifying blooms will be available at the show. Use white cards for unprotected, green cards for protected blooms.
5. When a camellia cultivar is listed in two sizes (e.g. "small to medium") it will be judged in the smaller size category, except in miniature bloom entries must be in fact be 2 1/2 inches in diameter or less.
6. Mississippi Gulf Coast grown (Division C) entries are limited to "novices" (growers with under three camellia show awards) Bloom entries should be submitted with the buff colored entry cards and marked "MS Gulf Coast" across the top. This division is designed to encourage local camellia growers to exhibit blooms without competing in the open class.
7. Each entry is eligible for only one award.
8. Only judges and authorized persons will be permitted in the exhibition area during judging of the blooms. Judges may refuse to award a ribbon to a given variety or class if they deem the entries to be below show quality. All accredited judges will judge seedlings and mutations.
9. All blooms become the property of the Mississippi Gulf Coast Camellia Society and will be disposed of by the show committee.
10. Entries will be received from 7:30 am until 10:00 am. No entries for competition will be accepted after 10:00 am. Judging will begin at 10:30. The show will be open to the public at 12:00 pm on Saturday.

Thanks to the judges

Al & Vickie Baugh, Spanish Fort, Al
Bill Bennett, Pensacola, Fl
Edna Bishop, Brookhaven, Ms
Joan Blanchard, Pensacola, Fl
Dudley Boudreaux, Port Neches, Tx
James Campbell, Covington, La
Vincent Ciolino, Covington, La
Walter Creighton, Semmes, Al
Richard Hooton, Pensacola, Fl
Paul Huerkamp, Pearl River, La
Joseph Jenus, Fort Walton, Fl
Michael Jinks, Brookhaven, Ms
Kaye Kaberlein, Summit Ms
Dante Kahn, Pensacola, Fl
Judy Kerr, Pensacola, Fl
Nick Kooney, Diamondhead, Ms
Walter & Gerri Krzymowski, Slidell, La
Maddox Mizell, Metairie, La
Lisa Miller, Pascagoula, MS
Olle Olsen, Pensacola, Fl
Patricia Perkins, Brookhaven, Ms
Gerald Phares, Greenville Springs, La
Michael Polozola, Greenville Springs, La
Gordon Rabalais, Arnaudville, La
Homer & Lynn Richardson, Brookhaven, Ms
James Smelley, Moss Point, Ms
Billie & Bruce Smith, Brookhaven, Ms
Roger Vinson, Pensacola, Fl
Skip Vogelsang, Pensacola, Fl
Tommy Weeks, Conroe, Tx